



Welcome - Henfield Annual Parish Meeting 2023



HENFIELD PARISH COUNCIL

Annual Parish Meeting

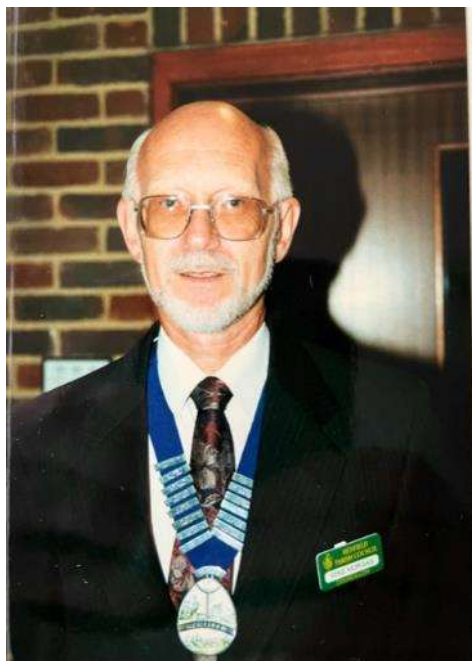
Chairman
Malcolm Eastwood



AGENDA

1. Welcome by Chairman of Henfield Parish Council
2. Agreement to the Minutes of the 2022 meeting
3. Chairman's report
4. Children and Young People
5. Community Transport
6. Chief Constable Sussex Police
7. Open Forum (For Henfield Residents to comment or ask their questions about life in Henfield)
8. Approve the date of the next years' Parish meeting





*Thank You
Mike*

Cllr Malcolm Eastwood
HPC Chairman

Community Fridge



Some Headlines from the last 12 months





2023 Year of Young People

Cllr Elaine Good year

Cllr Nita Farrell

You said - we listened



2021 Village Survey - 25% +
commented that Henfield should do
more for Children and Young People

More areas for young people that didn't involve joining clubs

Places for young people to go

Concern for Teens mental health

More non sport activities

Help Young People feel part of the Community



Funding



Involve Young People in activities in the village



The Parish Council are recruiting a youth coordinator

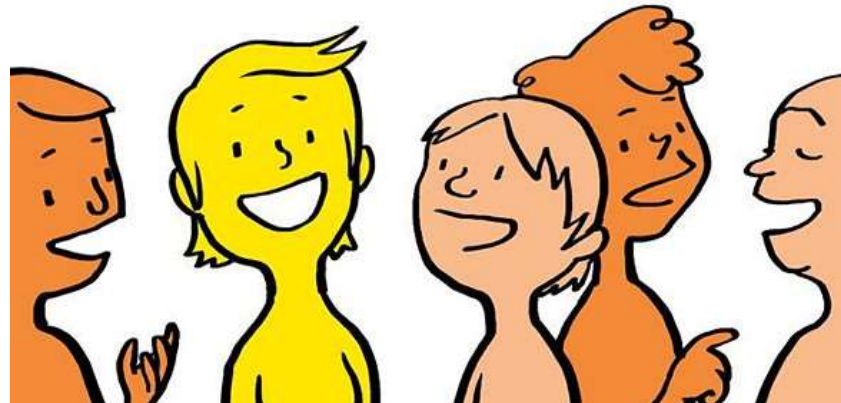


We consulted with young people to seek their views



Skate park improvement so can be used by all abilities

After school drop in to meet up with friends



Safe spaces

Henfield needs better transport to activities and venues

More Information about Careers and job opportunities

Kids Club – Henfield Leisure Centre

Under 12's

After school club Monday to Friday
from 3.15pm - 6.30pm..



NEW Hub on the High St

13 – 18 year olds

Starting in March each Wednesday
4pm – 6pm. After school drop in
Goodness café

Youth Hubs / Safe Spaces

NEW Hub @ the Club

- 16 – 18 year olds

Friday/Saturday Nights @ Henfield Club (no alcohol to under 18's)





Fund raising for skate park improvements



Seeking to hold a **Job Fair** in 2023 working with local business



2023 Events programme



Youth Forum

To reach out to young people for their opinions and views





Connecting Communities





Day Trips
Medical Appointments

This helps members keep their independence and not become isolated
Shops
Visit Family & Friends

In the past year the Henfield Community Bus:
We Completed 120,000 Community Passenger

Journeys A Year

- Was the main method of transport for 135 residents
- 39 of whom require some sort of mobility assistance
 - Plus 790 members of local community groups

That's Over 10,000 A Month!

Resulting in 4862 passengers trip, to and from the village

The Henfield EV Community Car Club:

- Will be facilitated by CT Sussex
- But owned by the Henfield community
 - 2 EV's will be supplied by CTS
- Parked in bays at Henfield Hall and Library



Volunteers and a local steering group will be recruited.
Supported by the CT Sussex development worker who will have overall responsibility for the day-to-day running of the club.





Volunteer drivers will be fully trained

To assist any resident or visitor to the village, who cannot drive themselves

At all other times, the cars will be available for members to hire for their own use!



At any time ...

For any reason...

To anywhere!

Once you've become a member...

The CT Sussex admin team will arrange your induction session.

Bookings can then be made online or over the phone via the CT Sussex admin team



In Development

A new registration and booking system is close to completion

With the telematic booking, via an app on your phone, coming later in the year



We've been looking for a West Sussex village to try this 18 month proof of concept Henfield Parish Council, have been supportive of the idea ever since we first spoke to them.

Why now? Why Henfield?

We've been impressed by the local community buy-in to the community year of green action



The parish council and the community are committed to reducing emissions and environmental sustainability

The Numbers:

Across West Sussex there are approximately **600 cars per 1,000 people**

So in Henfield that means over ...

3,300 cars running around the village!

29% of households, have 2 or more cars

It's unrealistic to expect households to give up their cars

But reducing second car ownership may be a realistic goal!

These zero-emission vehicles will help to reduce fossil fuelled journeys
Working with, HPC, HDC, WSCC, and Connected Kerb we will install the charge
points at the Henfield Hall and Library.

**Launch Targeted
for June**



We hope that membership of the Community Car Club will be seen as
easy and cost effective alternative for many people, to get out and
about wherever they want!

How Much?

Cost of membership will be £5 per month

Renting a car - £4 per hour for the first 3 hours

Daily and 24 hour hire will be available, cost to be confirmed

Compare this to the average annual cost of running a car
in the UK which is

In excess of £3,500!

We hope that ...



That the Electric Community Car Club will be a long-term sustainable asset for the village, which contributes to the environmental and carbon reduction ambitions of the Parish Council & community

A great resource for the village

Convenient, sustainable transport provided by CT Sussex, but with a real sense of ownership for Henfield



Chief Constable Jo Shiner

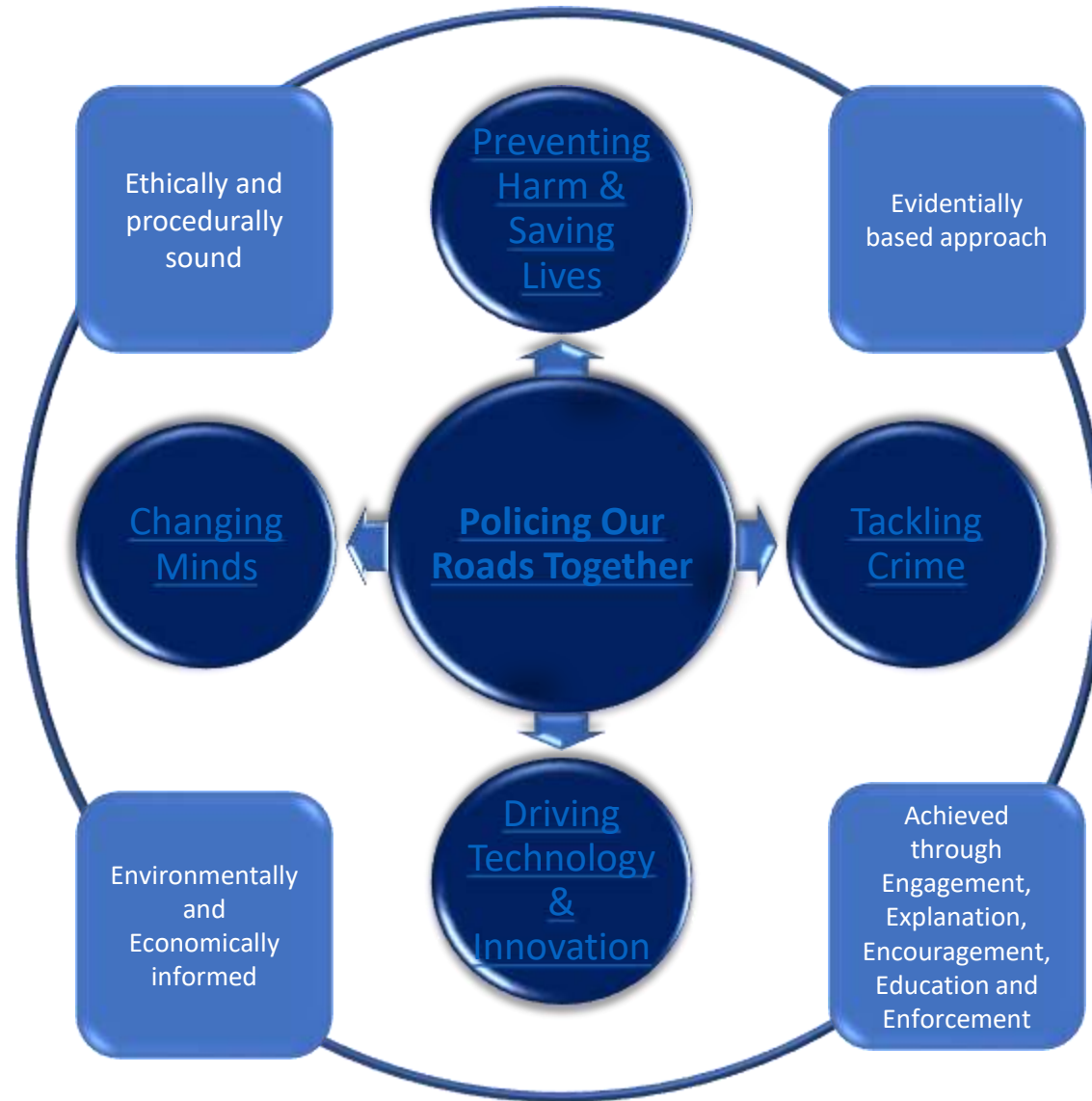


Sussex Police

1558



Sussex Police



Sussex Police

And onto Sussex.....Our County and Force - *A complex landscape*

Sussex is the 13th biggest county in England.

Spanning **1,461 square miles**, Sussex shares borders with **Kent, Surrey and Hampshire**.

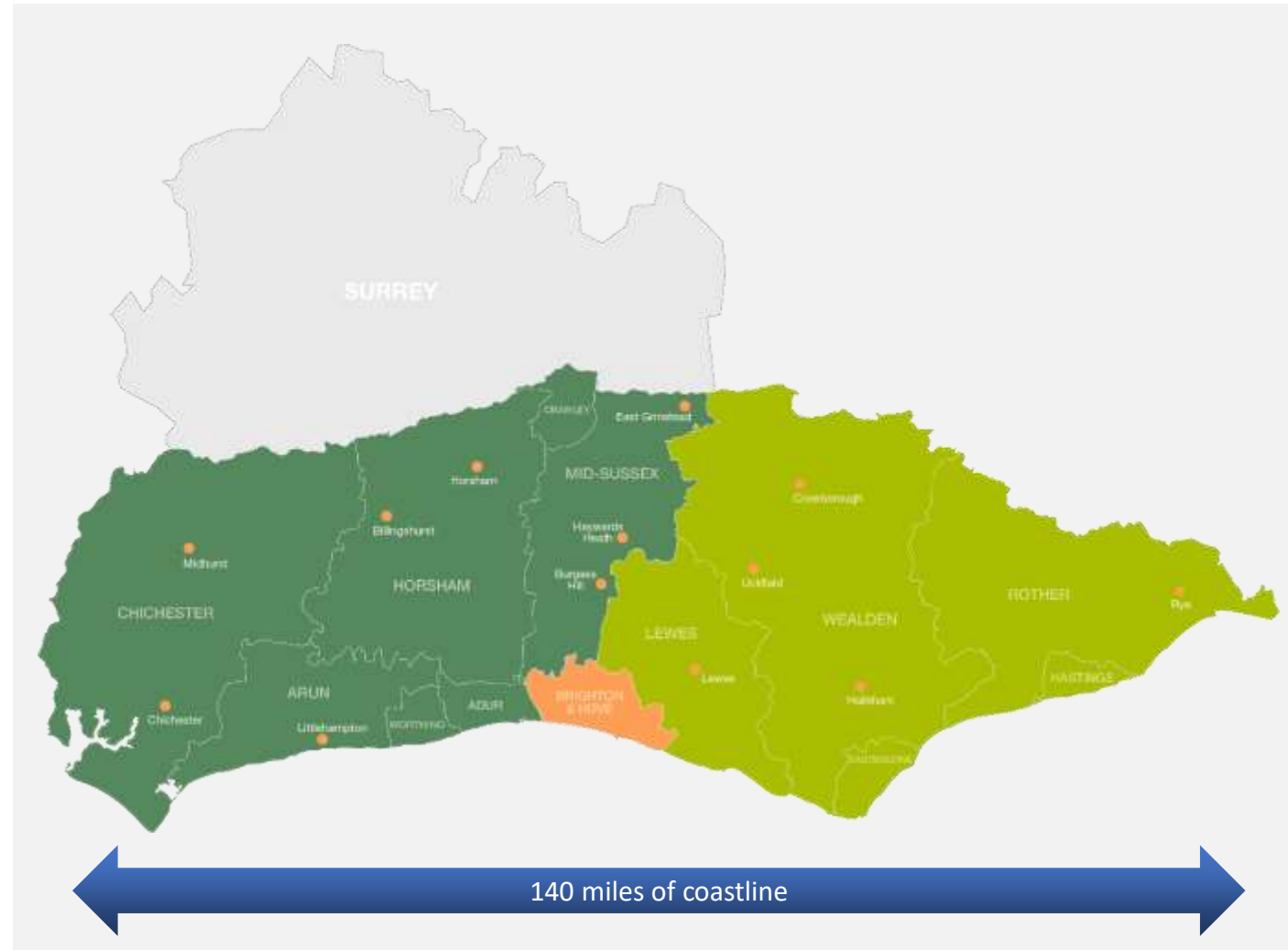
Sussex Police serves **East and West Sussex** and the city of **Brighton & Hove** - an area of **3,780km**.

A resident population of **1.65m** with millions of visitors, holidaymakers, students and seasonal workers.

Home to the **South Downs National Park** covering an area of 1,627 square kilometres (628 sq mi) which stretches for 140 kilometres (87 miles) from Winchester in the west to Eastbourne in the east through the counties of Hampshire, West Sussex and East Sussex.

Gatwick Airport – busiest single runway airport in the world with 39 million passengers who travel through the airport.

Sussex has **140 miles of coastline** which plays a vital part in the county alongside a **key strategic road network** which stretches 93 miles from east to west incorporating the M23, A23, A27 and A24.



Sussex Police

A day in the life...

2022 continues to see rises in emergency incidents and crime reporting. On an average day in 2022:

We received...



2,201

total contacts

including



791

999 calls



817

101 calls



593

digital
contacts

made up of



310*

emails



233

web-forms

And we
reviewed....

595

50
social media
messages

social media
comments

We recorded...



360

new crimes

including

64

relating to VAWG
(violence against women and girls)

with

55

involving a
vulnerable person

11

being hate crimes

83

assaults

87

acquisitive crimes

15

sexual offences

6

stalkings

and conducting

505



supervisory crime reviews

We created and risk assessed...



1,291

incident logs

initially sending
units to



484

with

208



of these being an
emergency response

(the remaining incidents were resolved at the point of contact or
transferred to other teams for further investigation)

Of these
incidents...

310 were a report of a
crime

89 related to a domestic
incident or crime

160 related to a medical
incident or concern

43 had a mental health
factor

32 were reporting a
missing person

28 had alcohol or drugs
factors

while the
equivalent of

11

officer
hours



were spent responding
to incidents at or near
Beachy Head

We undertook...



486

risk assessments

292

of which were for a child
or vulnerable adult

and carried out...

60

arrests



and

15

stop searches



And we
responded
to...

22

road traffic
collisions

involving

40

vehicles

* 101 email decommissioned and redirected to more efficient contact channels on 22 Aug

101 stats on this slide are 101 primary (dealt with by Initial Triage) to demonstrate the total demand managed by Sussex Police. In the rest of the report, 101 stats relate to 101 secondary (calls put through to Contact Officers) as per standard force reporting.

What are we here to do?

Lock up the bad people

Protect the good people

Do the right thing



Sussex Police



Thank you for listening - any questions?

Chief Constable Jo Shiner



Sussex Police

OPEN FORUM



Date of 2024 Parish Meeting

Tuesday 5th March 2024



HENFIELD PARISH
COUNCIL
Annual Parish Meeting

2023 reports



Your Parish Councillors



Malcolm Eastwood
Chairman of Council.
Member of Finance, Risk & Change, Plans Advisory and Open Spaces Committee



Elaine Goodyear
Vice Chairman of Council.
Chairman of Finance, Risk and Change Committee.
Member of Plans Advisory and Children and Young People Committee



Ann Donoghue
Chairman of Museum Committee. Member of Village Amenities, Finance, Risk & Change and Children and Young People Committee



Nita Farrell
Chairman of Children and Young People Committee and member of Village Amenities Committee



Daryn Grossmith
Member of Open Spaces and Plans Advisory Committee



Josh Potts
Member of Plans Advisory Committee and Children and Young People Committee.
Elected Member of Horsham District Council



Andrew Sharp
Chairman of Joint Commons Committee. Member of Open Spaces and Museum Committee



David Jemmett
Member of Open Spaces and Plans Advisory Committee



Jane Jones
Chairman of Village Amenities Committee.
Member of Finance, Risk & Change and Museum Committee



Richard Kendall
Member of Open Spaces and Village Amenities Committee



Mike Morgan
Member of Village Amenities Committee and Museum Committee.
Elected Member of Horsham District Council



Gillian Perry
Chairman of Open Spaces Committee. Member of Finance, Risk & Change and Plans Advisory Committee



Russell Shaw
Chairman of Plans Advisory Committee and member of Village Amenities Committee.



Chris Simmonds
Member of Village Amenities, Museum and Children and Young People Committee



Nigel Stevens
Member of Plans Advisory and Village Amenities Committee

RECREATION & OPEN SPACES COMMITTEE 2022 Achievements

Worked on restoring the Mound in the Kings Field children's playground
Considered the proposal for Padel Tennis near the Leisure Centre
Considered the drainage and grass cover on our playing fields



Liaised with local volunteers to help manage our verges, trees and wilder areas



Supported the further development of our local footpaths and trails



Increased the rate of tree planting in our village and supported the new Community Orchard



HENFIELD MUSEUM

A few Achievements 2022

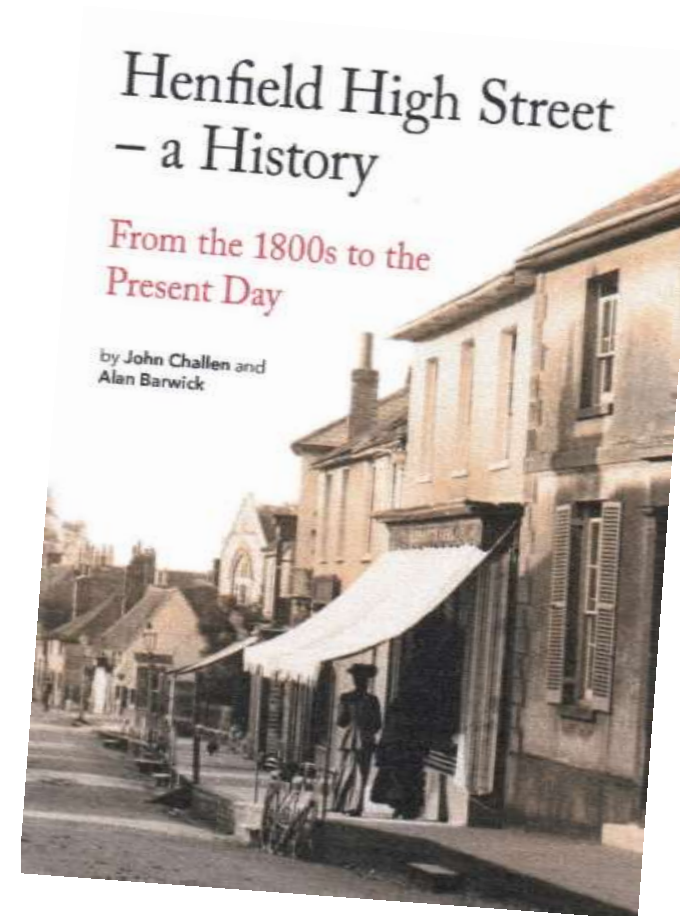
NEW “Henfield High Street – a History” From the 1800s to the Present Day book, which is available to purchase at £10,



The Roving Case was back out again in and around Henfield - featuring ‘What’s in the Kitchen’



During 2021 1298 visitors came in to visit the collection in person.
Over 11201 page views by 4103 people on the museum website.



Ann Donoghue



Jane Jones



Mike Morgan



Andrew Sharp

HENFIELD JOINT COMMONS COMMITTEE (HPC & HDC)

Henfield Common Management Plan & Actions Taken in 2022/23

This 10 year Plan has identified a number of priorities.

- A. The priority is to first slow the loss of, then preserve and grow the diversity of species.
- B. Restricting the spread of the woodland and invasive non-native plants into the open areas will support
- C. Sustaining wetland environments by restoring slowing water flow.



- D. Introduce a more varied depth of water in the reed
- E. Measuring the results of the management plan, species increases, showing progress and making adjustments.



Broadmare Common

We have received an ecologists management plan and are building an action plan based on this.



How Can You Help ?

If you can spare a little time on a come when you can basis to help with our work please email henfieldconservation@gmail.com

VILLAGE AMENITIES COMMITTEE 2022 Achievements

Our two new mobile Speed Indicator Devices
continue to provide useful information



The extension to the Cemetery is now in use and the
central area was consecrated by Bishop Ruth (of
Horsham) on 31st January



We are considering 20mph zones in the village



Jane Smith



David Morgan



Peter Morgan



Jane Morgan



Jane Morgan



Richard Kendall



Richard Kendall



Richard Kendall

PLANS ADVISORY COMMITTEE 2022

The table below summaries the work of the PAC over the period 1st April 2022 to 28th February 2023

Total Number of Planning Applications Reviewed	104
Number Supported (No Objections)	67
Number where we Objected	24
Number deferred for further information	6

What were the Planning Applications for?

New Houses	5
Extensions to existing homes	50
Removal or Reduction in Trees	20
Other planning matters	29

Where HDC or Inspector decision differed. With PAC (14 total)

The following observations are made about applications where opinions differed: -

1. 3 cases related to tree applications for felling where HPC objected to healthy specimens being removed.
2. 5 cases related to the conversion or demolition of garages or sheds for significantly larger ones or to create habitable space.
3. 1 case related to the amendment to design elements demolition of a bungalow replaced by a three-storey building.
4. 1 case related to the building of 3x2 storey houses outside the BUAB which HDC declined although HPC had no objection.
5. 2 cases related to change of use of the site.
6. 1 case related to the erection of a modern style detached garden room in the Conservation Area.
7. 1 case related to the addition of dormer window which HDC declined although HPC had no objection.



Russell Shaw



Elaine Goodyear



David Jemmett



Daryn Grossmith



Malcolm Eastwood



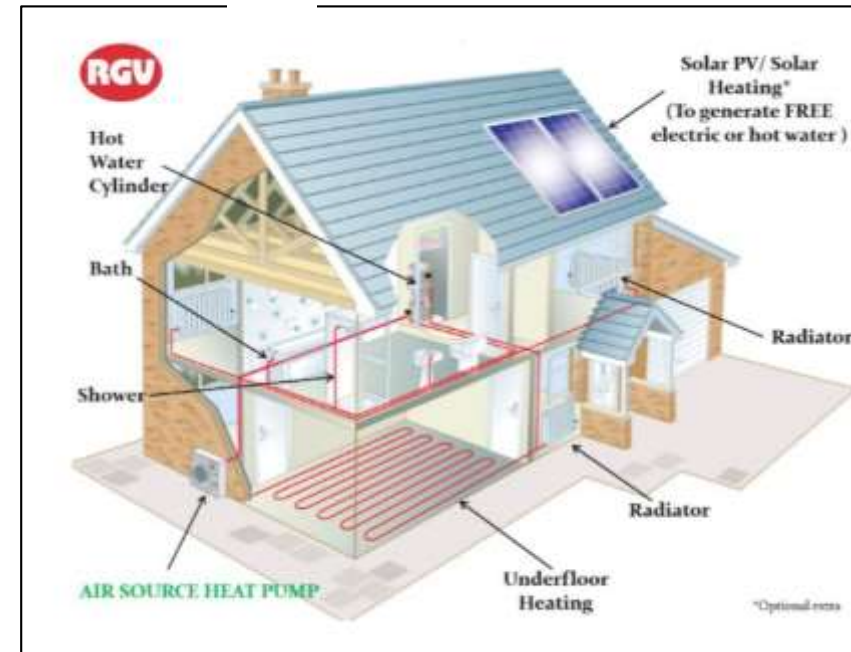
Gillian Perry



Nigel Stevens



HPC Plans Advisory Committee now uses specific criteria for assessing all planning applications with respect to environmental impact, climate change and sustainability. PAC will proactively look for applications to address ; Energy efficiency, renewable energy, protection of green space and tree coverage, resilience to climate impacts and water saving.



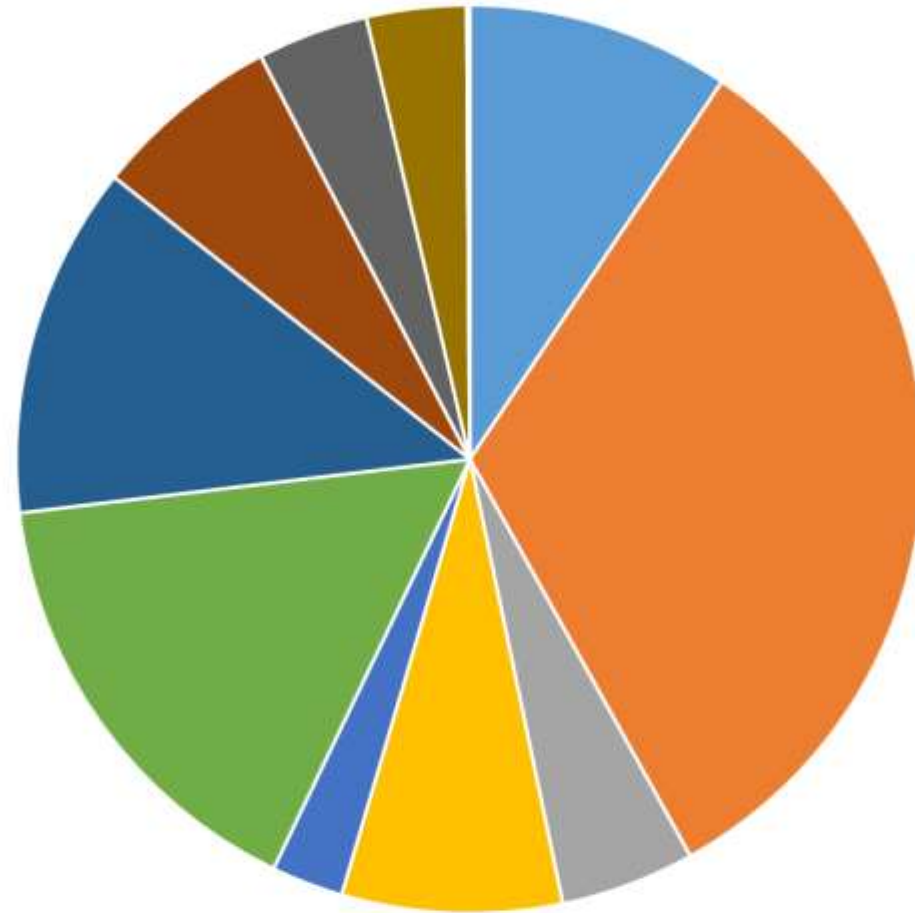
ALERT Protect our Hedgerows NOW



**It is a criminal offence to remove a hedgerow more than 20m long
without permission**

Report Hedgerow removal to - planning.compliance@horsham.gov.uk

Council Budget 2023/2024



- | | | | |
|------------------|-------------------|-----------------------------|----------------------------|
| ■ FRC Admin | ■ Employment cost | ■ Henfield Hall costs | ■ Recreation & Open Spaces |
| ■ Litter wardens | ■ Works Officers | ■ Children and Young People | ■ Village Amenities |
| ■ Public Toilets | ■ Cemetery | ■ Museum | |



Thank You
Henfield Annual Parish Meeting 2023



